

Cod (*Gadus morhua*) in Division 6.b (Rockall)

ICES advice on fishing opportunities

ICES advises that when the precautionary approach is applied, catches should be no more than 11 tonnes in each of the years 2024, 2025 and 2026.

ICES advice on conservation aspects

ICES has not identified any conservation aspects.

Stock development over time

ICES cannot assess the stock and exploitation status relative to MSY and precautionary approach (PA) reference points because information to define reference points is not available.

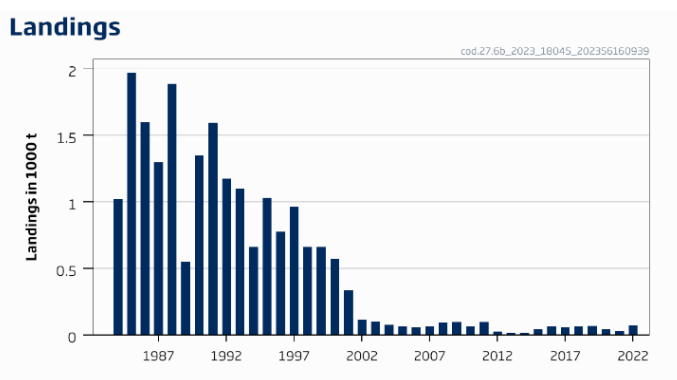


Figure 1 Cod in Division 6.b. Official landings (thousand tonnes) 1984–2012 and ICES estimated landings 2013–2022.

Conservation status

ICES is not aware of any information on stock/species-specific conservation status.

Catch scenarios

ICES framework for category 6 stocks was applied (ICES, 2012). For stocks without information on abundance or exploitation, ICES considers that a precautionary reduction of catches should be implemented where there is no ancillary information clearly indicating that the current level of exploitation is appropriate for the stock. The precautionary buffer was last applied in 2017 (for the 2018–2020 advice); and, with no new information available to support the current level of catches, the precautionary buffer is applied for the 2024 advice. Discarding is known to take place but cannot be fully quantified.

Table 1 Cod in Division 6.b. The basis for the catch scenarios.*

Advised catch (2021–2023)		14 tonnes
Discard rate		Unknown
Precautionary buffer	Applied	0.8
Catch advice [^]		11 tonnes
Landings advice		Unknown
% advice change **		–20

* The figures in the table are rounded. Calculations were done with unrounded inputs, and computed values may not match exactly when calculated using the rounded figures in the table.

** Advice value for 2024 relative to the advice value for 2023.

[^][Recent advised catches] × [precautionary buffer].

Basis of the advice

Table 2 Cod in Division 6.b. The basis of the advice.

Advice basis	Precautionary approach
Management plan	The EU multiannual plan (MAP) for stocks in the Western Waters and adjacent waters (EU, 2019) takes bycatch of this species into account. There is no agreed shared management plan with UK for this stock, and ICES provides advice according to ICES precautionary approach.

Quality of the assessment

There is limited information available on cod at Rockall, and the stock identity is unknown.

Issues relevant for the advice

Cod is a bycatch in fisheries at Rockall.

Reference points

No reference points are defined for this stock.

Basis of the assessment

Table 3 Cod in Division 6.b. The basis of the assessment and advice.

ICES stock data category	6 (ICES, 2023a)
Assessment type	No assessment
Input data	Landings
Discards and bycatch	Unknown
Indicators	None
Other information	None
Working group	Working Group for the Celtic Seas Ecoregion (WGCSE)

History of the advice, catch, and management

Table 4 Cod in Division 6.b. ICES advice and official landings. Weights are in tonnes.

Year	ICES advice	Predicted catch corresponding to advice	Agreed TAC	Landings taken from the NEAFC area^^	Total official landings
2001	No advice	-	3700*		334
2002	No advice	-	4600*		115
2003	No advice	-	1808*		102
2004	No advice	-	848*		75
2005	No advice	-	721*		62
2006	No advice	-	613*		58
2007	No advice	-	490*		62
2008	No advice	-	402*		96
2009	No advice	-	302*		97
2010	No advice	-	80**		61
2011	No advice	-	78**		98
2012	No increase in catch.	-	78**		23
2013	Reduce catch by 20%.	< 70	74**		14
2014	Same advice as for 2013.	< 70	74**		16
2015	Same advice as for 2013.	< 70	74**	13	41
2016	Precautionary approach (catch should not exceed the average landings of 2012–2014).	≤ 17	74**	3	63
2017	Precautionary approach (same advised catch value as provided for 2016).	≤ 17	74**	3	57

Year	ICES advice	Predicted catch corresponding to advice	Agreed TAC	Landings taken from the NEAFC area ^{^^}	Total official landings
2018	Precautionary approach (latest advised catch, PA buffer applied).	≤ 14	74 ^{**}	1 [^]	64 [^]
2019	Precautionary approach (same advised catch value as provided for 2018).	≤ 14	74 ^{**}	2 [^]	56 [^]
2020	Precautionary approach (same advised catch value as provided for 2018).	≤ 14	74 ^{**}	1 [^]	42 [^]
2021	Precautionary approach. Latest advised catch.	≤ 14	74 ^{**}	+ ^{***}	26 ^{***}
2022	Precautionary approach. Latest advised catch (as provided for 2021).	≤ 14	74 ^{**}	2 ^{***}	71 ^{***}
2023	Precautionary approach. Latest advised catch (as provided for 2021).	≤ 14	74 ^{**}		
2024	Precautionary approach	≤ 11			
2025	Precautionary approach (same advised catch value as provided for 2024)	≤ 11			
2026	Precautionary approach (same advised catch value as provided for 2024)	≤ 11			

* Subarea 6; EU waters of Division 5.b; EU and international waters of subareas 12 and 14.

** Division 6.b; EU and international waters of Division 5.b west of 12° 00'W and of subareas 12 and 14.

*** Preliminary.

+ < 0.5 tonnes.

[^] Incomplete/missing, as part of the data is unavailable under data confidentiality clauses.

^{^^} Official landings except for 2021 and 2022, which include ICES estimates.

History of catch and landings

Table 5 Cod in Division 6.b. Catch distribution by fleet in 2022 as estimated by ICES.

Catch	Landings		Discards
	otter trawl 86%	other 14%	
Unknown	71 tonnes		unknown

Table 6 Cod in Division 6.b. History of official landings by country and ICES estimated total landings. Weights are in tonnes.

Year	Faroe Islands	France	Germany	Ireland	Norway	Portugal	Russia	Spain	UK (E. & W. & N.I.)	UK (Scotland)	UK	Total official landings	ICES landings
1984	18	9	-	-	373	-	-	241	161	221	-	1023	
1985	-	17	3	-	202	-	-	1200	114	437	-	1973	
1986	1	5	-	-	95	-	-	1219	93	187	-	1600	
1987	-	7	-	-	130	-	-	808	69	284	-	1298	
1988	31	2	3	-	195	-	-	1345	56	254	-	1886	
1989	5	-	-	-	148	-	-	-	131	265	-	549	
1990	-	-	-	400	119	-	-	64	8	758	-	1349	
1991	-	-	126	236	312	-	-	70	23	829	-	1596	
1992	-	-	2	235	199	-	-	-	26	714	-	1176	
1993	1	-	-	472	199	-	-	-	103	322	-	1097	
1994	-	-	-	280	120	-	-	-	25	236	-	661	
1995	-	-	-	477	92	-	-	2	90	370	-	1031	
1996	-	-	10	436	91	-	-	5	23	210	-	775	
1997	-	-	22	153	55	5	-	1	20	706	-	962	
1998	-	-	3	227	51	-	-	6	32	341	-	660	
1999	-	-	11	148	85	-	-	4	22	389	-	659	
2000	-	+	1	119	152	-	7	3	4	286	-	572	
2001	-	-	-	40	89	-	26	1	2	176	-	334	
2002	-	+	-	18	28	-	-	-	2	67	-	115	
2003	-	+	-	11	25	-	-	6	3	57	-	102	
2004	-	-	-	7	23	-	-	-	-	45	-	75	

Year	Faroe Islands	France	Germany	Ireland	Norway	Portugal	Russia	Spain	UK (E. & W. & N.I.)	UK (Scotland)	UK	Total official landings	ICES landings
2005	-	-	-	12	7	-	-	-	-	43	-	62	
2006	-	-	-	23	7	-	-	-	-	29	-	58	
2007	-	-	-	24	12	-	-	-	-	26	-	62	
2008	-	-	-	41	12	-	-	-	-	41	-	94	
2009	3	-	-	20	25	-	1	-	-	48	-	97	
2010	5	-	-	6	27	-	-	-	-	23	-	61	
2011	+	-	-	12	49	-	-	-	-	37	-	98	
2012	-	-	-	1	11	-	-	-	-	11	-	23	
2013	-	-	-	2	3	-	-	-	-	9	-	14	14
2014	-	-	-	6	1	-	-	-	-	-	10	16	16
2015	-	-	-	5	18	-	-	-	-	-	18	41	41
2016	+	-	-	15	11	-	-	-	-	-	37	63	63
2017				17	3						37	57	57
2018				14 [^]	1						49	64 [^]	64
2019				[^]	5			+			51	56 [^]	68
2020		+		14 [^]	1			+			27	42 [^]	40
2021*				4							21	26	27
2022*	7			10				+			53	71	71

+ < 0.5 tonnes

* Preliminary official landings

[^] Incomplete/missing as part of the data is unavailable under data confidentiality clauses.

Summary of the assessment

There is no assessment for cod in this area.

Sources and references

EU. 2019. Regulation (EU) 2019/472 of the European Parliament and of the Council of 19 March 2019 establishing a multiannual plan for stocks fished in the Western Waters and adjacent waters, and for fisheries exploiting those stocks, amending Regulations (EU) 2016/1139 and (EU) 2018/973, and repealing Council Regulations (EC) No 811/2004, (EC) No 2166/2005, (EC) No 388/2006, (EC) No 509/2007 and (EC) No 1300/2008. Official Journal of the European Union, L 83. 17 pp. <http://data.europa.eu/eli/reg/2019/472/oj>

ICES. 2012. ICES Implementation of Advice for Data-limited Stocks in 2012 in its 2012 Advice. ICES CM 2012/ACOM:68. 42 pp. <https://doi.org/10.17895/ices.pub.5322>

ICES. 2023a. Advice on fishing opportunities (2023). General ICES Advice guidelines. Report. <https://doi.org/10.17895/ices.advice.22240624.v1>

ICES. 2023b. Working Group for the Celtic Seas Ecoregion (WGCSE). Draft report. ICES Scientific Reports. 5:32. 976 pp. <https://doi.org/10.17895/ices.pub.22268980>. Publication of the full report is expected end of 2023.

[Download the stock assessment data and figures](#)

Recommended citation: ICES. 2023. Cod (*Gadus morhua*) in Division 6.b (Rockall). In Report of the ICES Advisory Committee, 2023. ICES Advice 2023, cod.27.6b. <https://doi.org/10.17895/ices.advice.21840771>